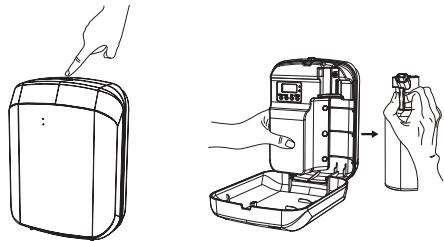


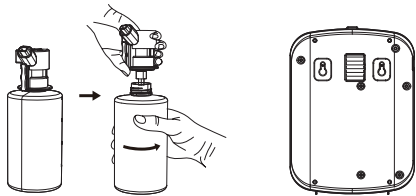
Please read carefully before use and keep it properly.  
We supply warranty within 12 months after purchase date for all qualified machines.

### ◇ Operation



① Press the top button open the cover.

② Pull out the atomizer head and essential oil bottle as a whole.



③ Take out the essential oil bottle, add essential oil and put it back on the atomizer head.

④ Put the atomizing head back into the device and close the cover.

Wall-mounted: First fix the wall-mounted backplane to the wall, and then hang the device on the backplane hole along the screw position.

### ◇ Packing

Smart fragrance equipment x1, power adapter x1, bottle x1, wall backing x1, instruction manual x1

### ◇ Function Keys

1 Conventional model: (this model does not have Bluetooth and essential oil level detection function)

① **MODE**: Adjust different function, including your local current time, 5 different groups working periods, Work/Pause interval time, aroma concentration. On the initial page, **long press [MODE] for 10 seconds to restore the factory settings.**

② **SET**: Start program Setting by flexible setting including the Time, Date, aroma concentration. Then **press [SET] for 5 seconds to lock /unlock the previous setting.**

③ **UP**: Press it to adjust/increase the function, such as adjust the time, aroma concentration, working days. **Press and hold the UP button for 5 seconds to turn the fan on and off**

④ **DOWN**: Press it to adjust/increase the function, such as adjust the time, aroma concentration, working days.

⑤ **Lock/unlock**

⑥ **Bluetooth /working indicator light**

When working: green light flashing  
When paused: solid green

2 Bluetooth model

**Bluetooth /working indicator light**: The Bluetooth (blue) indicator flashes when connected to Bluetooth or parameter update

⑦ **Bluetooth sign**: displayed when connecting

3 Bluetooth & Level indicator model

⑧ **Oil volume level indicator light**

When the green light is on: the oil level is high

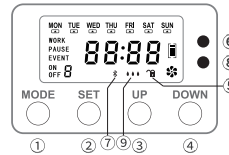
When the yellow light is on: the oil level is medium in amount

When the red light is on: the oil level is low, the red light flashes, indicating that the oil level is insufficient, refill the essential oil in time.

⑨ **Oil level sign**

\*\*When reset to factory settings, the device defaults to button control.

When connected to Bluetooth, bluetooth control is prioritized.



### ◇ System time setting

Firstly to press [SET], the LCD display showed "hours" figure will flash, then press [UP/DOWN] to adjust hour. Press [SET] at second time. Hour adjustment finished. The minutes figure will flash, then press [UP/DOWN] to adjust the minutes. Press [SET] at the third time, Minutes adjustment finished. The indicated date will flash, press [UP/DOWN] to adjust the current date, finally press [SET] at fourth time, all function setting finished.

### ◇ Set the working periods (5 groups in total)

**A** Press the [MODE] key for the first time, the LCD display shows the factory-set time, and the machine can set 5 working time periods. Example: Set 08:00-10:00, 11:00-12:00, and 13:00-14:00. Over 00:00, just set two time periods, such as the first time period 08:00-23:59, the second time period 00:01-06:00.

Press the [SET] key for the first time to enter the start working time setting of the first period of time, the hour start period number flashes, press the [UP/DOWN] key to adjust the hour start time. Press the [SET] key for the second time, the hour starts. After the time period is set, the number of minutes start time period flashes, press [UP/DOWN] key to adjust the time start time of minutes. Press [SET] key for the third time, the minutes start time period is set, the group number flashes when the week matches, press [UP] key to display the symbol "▲" in the week column at the top of the LCD screen is to select the required work week, do not display "▲" that is not selected, and then press [DOWN] to move to the right to continue setting other week combinations.

**B** Press the [MODE] key for the second time to set the end time range of the first time range. Press the [SET] key for the first time, and the end hour period will flash. Press the [UP/DOWN] key to adjust the end hour period. Press [SET] for the second time to SET the hour end period and flash the minute end period. Press [UP/DOWN] to adjust the minute end period.

**C** Press the [MODE] key for the third time to set the device work density. Press [UP/DOWN] key to adjust the density, select the appropriate density, and adjust for 5s each time, the maximum value is 300s, and the minimum value is 5s.

**D** Press the [MODE] key for the fourth time to set the device pause density. Press [UP/DOWN] key to adjust the density, select the appropriate density, and adjust for 5s each time, the maximum value is 300s, and the minimum value is 20s.

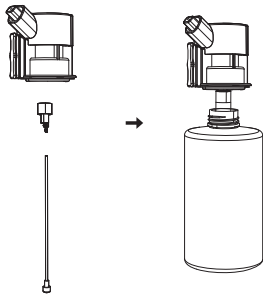
**##** After setting, you can set next mode as needed, and you can continue to press [MODE] to return to the LCD home page if you don't need.

### ◇ Product parameters

• Size: 212×158×75mm	• Weight: 0.8kg
• Voltage: DC 12V	• Capacity: 400ml
• Power: 8W	• Coverage: 500-1000m <sup>3</sup>

#### ◇ Replace the atomization core

The atomization head include: oil bottle,oil suction pipe,filter,atomization core. Take down the oil bottle, pull out the suction pipe, remove the atomization core,then insert the new atomizing core into the main body of the atomization head, and align the oil suction pipe with the small hole in the atomization core and press it tightly.



#### ◇ Equipment maintenance

If the equipment is not used for a long time, 95% industrial alcohol should be added into the refined oil bottle to clean the nozzle and other parts inside the equipment.Tip: Maintain the equipment with 95% industrial alcohol at least every 1-2 months.

Specific operation: add 95% industrial alcohol into the empty bottle, turn on the equipment and run for 10-15 minutes after , then turn off the equipment and pour the alcohol, then screw back the bottle to machine.

#### ◇ Warranty

1.The Warranty is suitable for new machine but not resell or second hand products.

2.Within 12 months after purchase date, Warranty is offered for all qualified machines. During warranty,we will offer repair services and the free parts but without essential oil.

3.The warranty card & purchase Invoice are needed if after service required. Please contact with us within warranty if any problems.

4.The following is not for free warranty service:

- ①Damage & problems caused by Accidents & Fire.
- ②Not use properly and wrong operation.
- ③If repaired by not professional person and make some parts damaged.
- ④Damaged during transportation.
- ⑤Without our warranty card.
- ⑥Without proper cleaning for a long time
- ⑦The machine work time out.
- ⑧Machines & Parts not from us.
- ⑨Machines not gotten from official channels.
- ⑩Send the machines back without permit from manufacturer.

#### ◇ Notice

1.Please carefully read the Instruction before installation, and keep the User manual to check if need at anytime

2.Please make sure the machine upright ,no leaking and no down; or may damage the device and parts

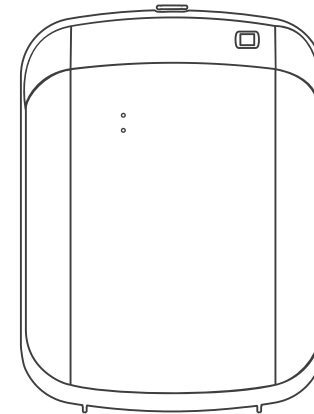
3.Please do not use the broken power wire and make sure the power supply is suitable for the machine, or may cause fire .

4.Please do not open the machine by yourself, If problems, please contact us promptly !

## SMART SCENT DIFFUSER



USER MANUAL



Please read the manual carefully and keep it properly before use